

SCREW COMPRESSOR S57E - 34  
Refrigerating capacity and power consumption  
Volume ratio 3.4  
STALOMIZER

**Capacity and power consumption**

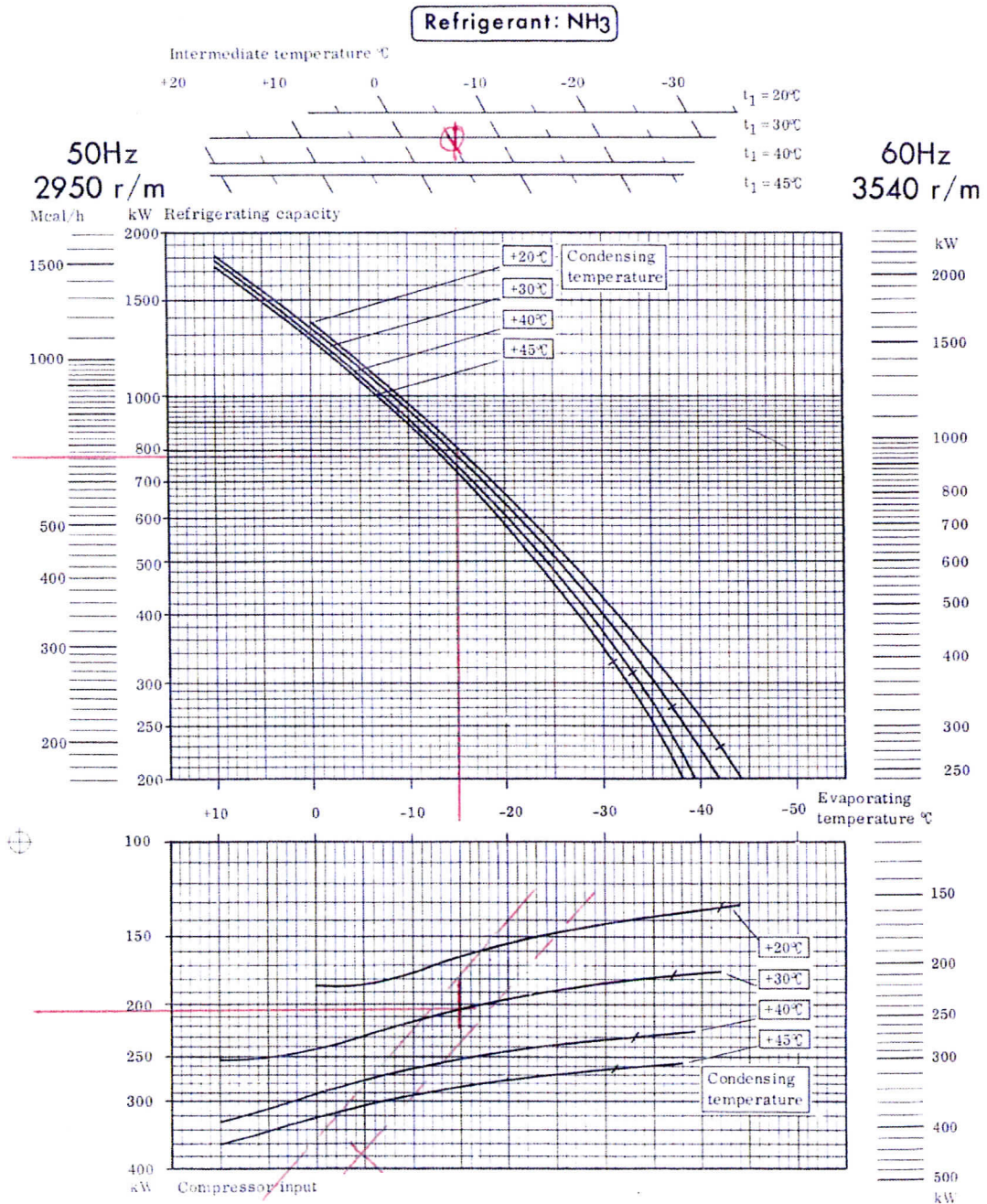
The capacity curves refer to a process with subcooling of the liquid to the intermediate temperature (Stalomizer-temperature) and with no superheating of the suction gas. For STALOMIZER-system with heat exchanger the capacity should be reduced 2%. Correction for superheating is to be made according to manual sheet 430-E-1. For operating conditions outside shaded area select higher or lower built-in volume ratio for best efficiency. The capacity data are based on measurements on series-produced machines.

**Condenser performance**

For condenser performance see manual sheet 4840-E-1.

**Limitations**

There are certain limitations in the operation range of the compressor. At evaporating temperatures lower than those marked with small cross lines on the curves, a special low temperature arrangement must be used. For combination of condensing and evaporating temperatures outside the curves, ask for further information.



4845-E-30aE  
4/4  
Pa 1975-02

Screw compressor S57, S57B

**STAL**  
REFRIGERATION

SCREW COMPRESSOR S57 B - 26  
Refrigerating capacity and power consumption  
Volume ratio 2.6

Booster

Capacity and power consumption

The capacity curves refer to a process with no subcooling of the liquid and no superheating of the suction gas. Corrections for subcooling and superheating are to be made according to manual sheet 430 - E - 1.

The capacity data are based on measurements on series-produced machines.

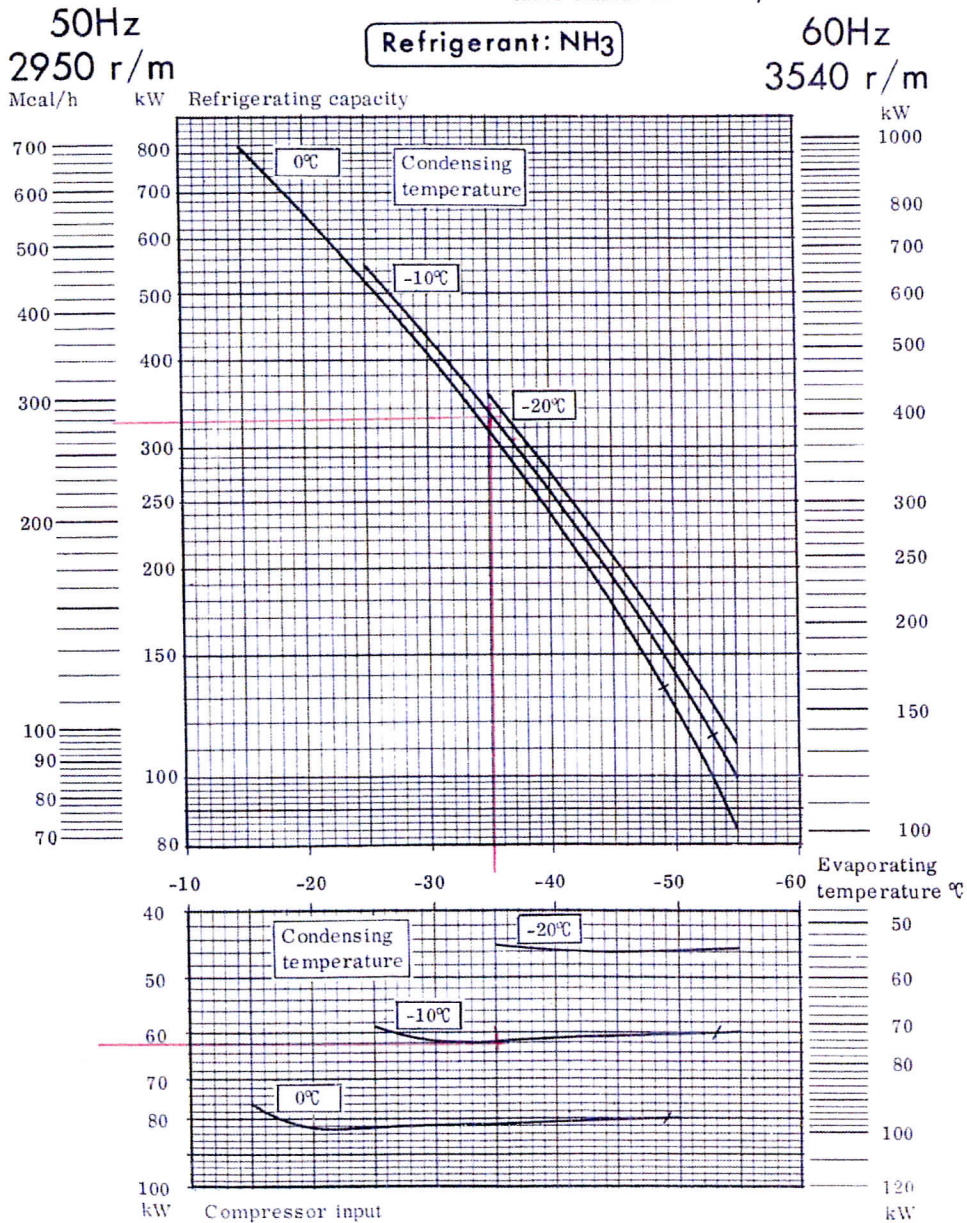
Condenser performance

For condenser performance see manual sheet 4840 - E - 1.

Limitations

There are certain limitations in the operation range of the compressor. At evaporating temperatures lower than those marked with small cross lines on the curves, a special low temperature arrangement must be used.

For combination of condensing and evaporating temperatures outside the curves, ask for further information.



SCREW COMPRESSOR S57 - 34  
Refrigerating capacity and power consumption  
Volume ratio 3.4

Capacity and power consumption

The capacity curves refer to a process with no subcooling of the liquid and no superheating of the suction gas. Corrections for subcooling and superheating are to be made according to manual sheet 430 - E - 1. For operating conditions outside shaded area select higher or lower built-in volume ratio for best efficiency.

The capacity data are based on measurements with series-produced machines.

Condenser performance

For condenser performance see manual sheet 4840 - E - 1.

Limitations

There are certain limitations in the operation range of the compressor. At evaporating temperatures lower than those marked with small cross lines on the curves, a special low temperature arrangement must be used. For combination of condensing and evaporating temperatures outside the curves, ask for further information.

